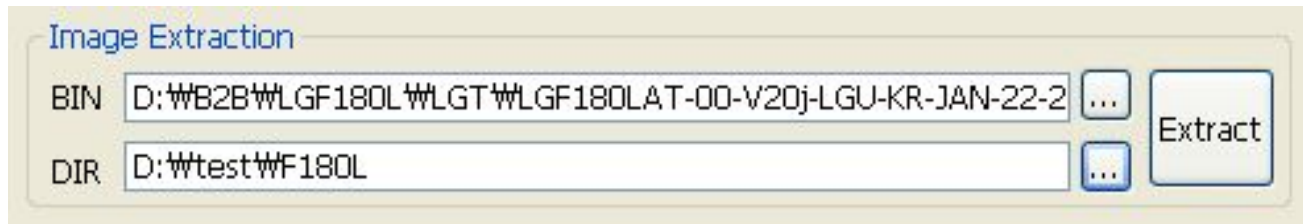


6. BoardDiag Setting Detail(1)

1) Image Extraction

- Extracting images needed for diagnosis SW to download on the terminal from each model's Binary tot file
- Ex.) As for F180L, images are extracted from LGF180LAT-00-V20j-LGU-KR-JAN-22-2013+0.tot.



1. **BIN** : Selects a Binary tot file for each model
Ex.) LGF180LAT-00-V20j-LGU-KR-JAN-22-2013+0.tot
2. **DIR** : Selects a folder to save the images extracted from the Tot file.
3. **Extract** : Starts extraction.
4. On completion, “**Complete**” pop-up appears.

<Important 1>

If you did Image Extraction once per a model, you don't have to extract again because you already made “Target Directory” for the model.

<Important 2>

BIN or DIR's folder name and its path name SHOULD include English characters only.

Using other characters except English or special characters will cause unexpected errors.