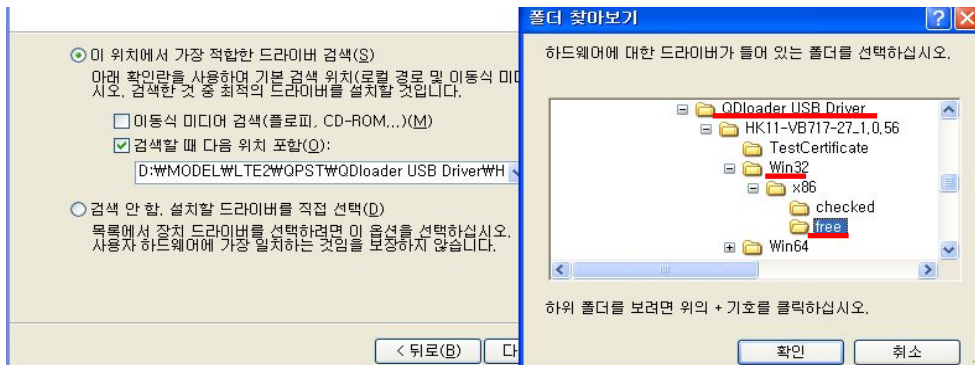
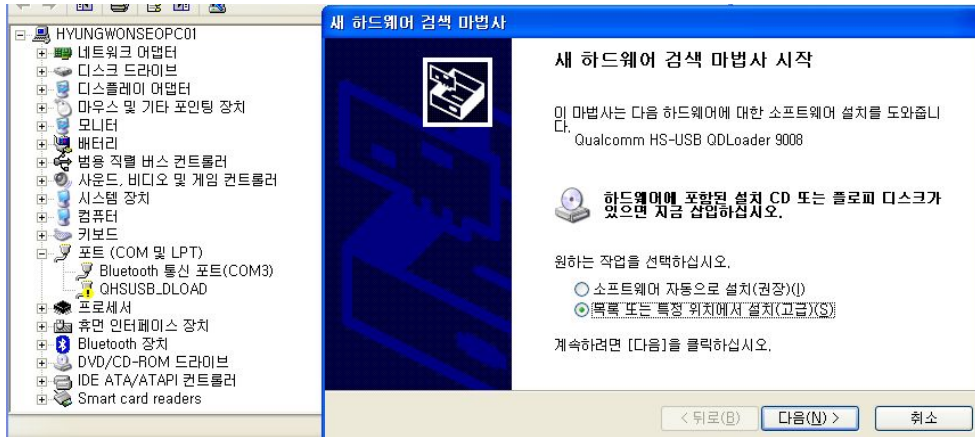


3. Qualcomm Download Mode

- Qualcomm main chipset's BOOT area recovery mode
- When AP processor fails to boot up normally, it automatically enters Qdload mode.
- This mode enables eMMC access. eMMC interface is used to read/write.
- Qualcomm QDloader USB Driver need be installed.



- Qualcomm Qdloader port is successfully read:

