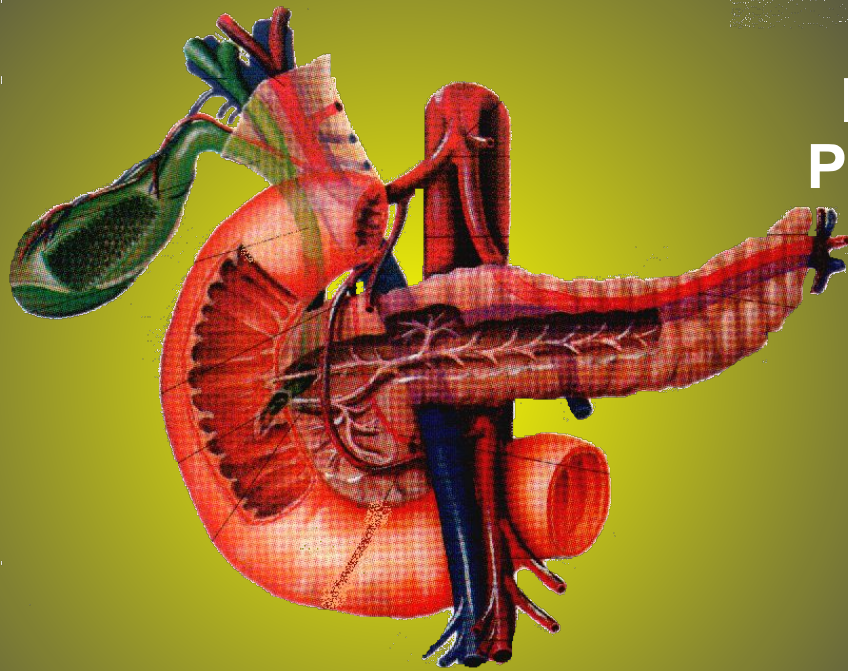


# **PATHOGENESIS OF ACUTE PANCREATITIS AND ITS COMPLICATIONS**

**LEADING HAND IN ACUTE  
PANCREATITIS PATHOGENESIS  
BELONGS TO  
PANCREATIC ENZYMES**



**ELEVATION OF INTRADUCTAL  
PRESSURE WITH CYTOKINASE  
OUTLET AND TRIPSPIN  
ACTIVATION,  
REFLUX OF BILE INTO  
PANCREATIC DUCT  
WITH LIPASE ACTIVATION**