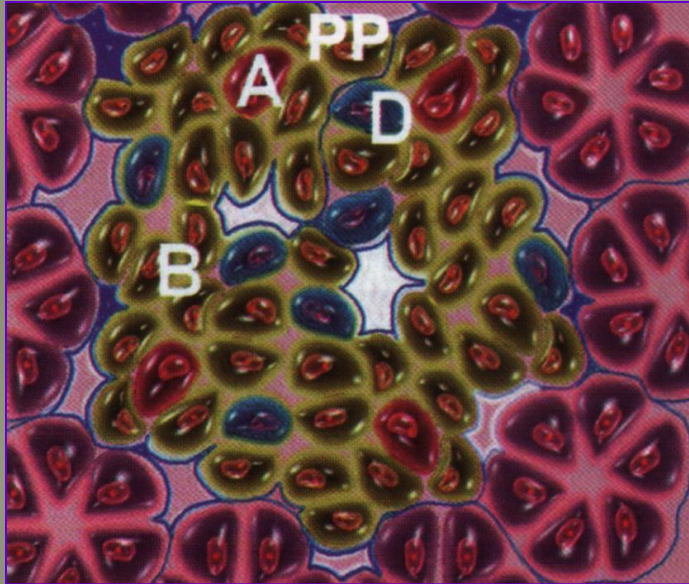


INCRETORY FUNCTION OF THE PANCREAS



IS REALISED BY
 α , β AND D CELLS
IN ISLETS OF LANGERHANS
(PANCREATIC HORMONES
TAKE PART
IN REGULATION OF LIPID
AND CARBOHYDRATE
METABOLISM)

β – CELLS EXCRETE INSULIN

α – CELLS EXCRETE GLUCAGON

D – CELLS EXCRETE LIPOCAIC